



**E2**

Made in Italy



*“the “wow” factor!  
adding value to your home and lifestyle”*

# 8 great reasons to choose Lift Shop

01

## CERTAINTY

A showroom visit lets you experience the lift before you own it.

Showroom visits are essential to help you learn and experience the proposed lift system.

Informed and educated purchasers usually select the best.

Research your options carefully.

Our showrooms are incredible learning environments.

02

## THE SAFEST LIFTS

In-cabin self-rescue feature is a standard inclusion.

24/7 call centre assistance.

AS1735 code compliant.

Full height infra-red light ray curtains.

Automatic lower and unlocks in the event of a power failure.

Proven reliability.

Proven technology.

03

## THE LEADER FOR TECHNOLOGY

2 speed drives for maximum speed with smooth acceleration.

Computer monitoring of the latest lift operations for efficient diagnosis and repair.

Sized to suit, and styled to suit, has always been the Lift Shop advantage and the big difference from others.

04

## THE PROCESS

We are not like the others.

Our designers assist to create the right lift, personalised to your requirements.

After your order is agreed, the construction support, site managers and installation teams will ship your Italian made lift to site and install it.

Our 140+ full time and experienced employees are installing more than 700 new lifts a year. The service department provides 24/7 support after that.

At Lift Shop you are supported from the start onwards. Its more than just a lift, it's a winning process.

05

## UNBEATABLE VALUE

Our formula

Lifts – proven long history, stable and secure manufacturer, ultra-reliable premium quality.

Volumes – Lift Shop sells more lifts than any other Australian home lift specialist.

Costs – Annual costs shared by 5 offices, 700+ new lift clients, and thousands of routine service clients.

We do not have hidden extras.

Experience + Efficiency + Scale  
= Great Value

06

## A GENUINELY GREAT REPUTATION

Check Google Reviews and sites like [productreview.com.au](http://productreview.com.au)

100's of genuine, original testimonials from real clients can be read in our showroom's.

Independent awards and recognition.

We do not offer marketing testimonials.

Dealing with Lift Shop is fun and easy.

07

## LOW SERVICE COSTS

Lift Shop only services and maintains its own quality lifts with full technical support and spares in Australia.

Other companies lifts distract from the attention good clients deserve.

We focus on you, with service plans tailored to your needs.

The large service team maintains 1000's of lifts.

See the mapping interface online for the service clients near you.

08

## THE NO.1 HOME LIFT SPECIALIST

We are Australia's largest and best.

Lift Shop is a genuine full-service lift company with a range of premium proven home lifts.

We are the undisputed leader in Italian elevators.

We speak English, not jargon.

Our documents and quotes are clear and easy to understand.



*“innovation  
redefined”*

Wellington Point, QLD

## Why It's Great

- Superior design & performance
- Next generation electric traction or traditional hydraulic
- Custom or pre engineered to meet your budget
- A full size lift designed to fit small spaces
- Italy's very best
- Personalised for you
- Short lead times



Surry Hills, NSW





## Free Inclusions

- MUST HAVE In-Cabin Self Rescue (\$1,380)
- Free storage one month (\$800)
- Material transport from storage to site (\$990)
- 2100mm cabin ceiling height (\$1,500)

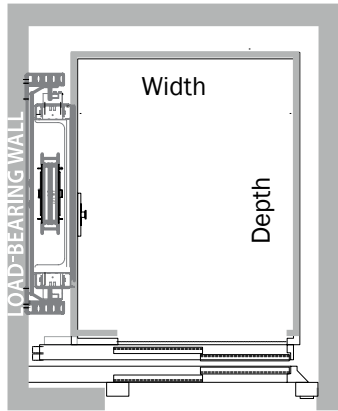


## Specifications

	Traditional Hydraulic	Next Generation Electric Traction
Capacity:	4 - 5 persons 400kg	
Speed:	Fast (0.30m/s) Approx 18 seconds for 3 floors	
Power:	Single phase 240V, 32A Low energy consumption	
Max travel:	6 floors 12m	
Openings:	Single (1), opposite (2), adjacent (2)	
Drive system:	Hydraulic	Electric traction
Headroom:	2500 - 2800mm	
Pit depth:	150 – 180mm	
Compliance:	AS1735.16, AS1735.18 and NCC E3.6	
Machine space	700mm x 560mm x 1535mm	Machine room less (MRL)
In-cabin rescue option:	Included	

# shafts by builder - designed to fit your space

## single opening - side drive



Cabin Width  
Cabin Depth  
Internal Shaft Width  
Internal Shaft Depth

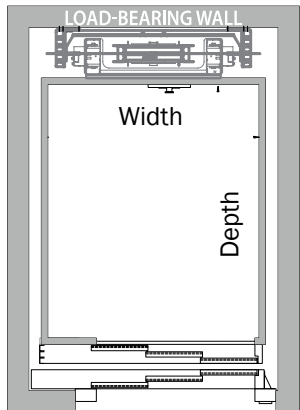
POPULAR HYDRAULIC SIZES								*
800	1000	1000	1000	1200	1200	1100		
1000	1000	1200	1300	1200	1300	1400		
1250	1450	1450	1450	1550	1550	1550		
1320	1320	1520	1620	1520	1620	1720		

CUSTOM SIZE - HYDRAULIC FORMULA	
1120mm Cabin Width	+ 450 = 1570mm Shaft Width
1130mm Cabin Depth	+ 320 = 1450mm Shaft Depth

POPULAR ELECTRIC SIZES								*
900	1000	1000	1000	1200	1200	1100		
1000	1000	1200	1300	1200	1300	1400		
1400	1500	1500	1500	1600	1600	1600		
1320	1320	1520	1620	1520	1620	1720		

CUSTOM SIZE - ELECTRIC FORMULA	
1120mm Cabin Width	+ 500 = 1620mm Shaft Width
1130mm Cabin Depth	+ 320 = 1450mm Shaft Depth

## single opening - rear drive



Cabin Width  
Cabin Depth  
Internal Shaft Width  
Internal Shaft Depth

POPULAR HYDRAULIC SIZES								*
800	1000	1000	1000	1200	1200	1400		
1000	1000	1200	1300	1200	1300	1100		
1160	1360	1360	1360	1560	1560	1760		
1500	1500	1700	1800	1700	1800	1600		

CUSTOM SIZE - HYDRAULIC FORMULA	
1130mm Cabin Width	+ 360 = 1490mm Shaft Width
1120mm Cabin Depth	+ 500 = 1620mm Shaft Depth

POPULAR ELECTRIC SIZES								*
900	1000	1000	1000	1200	1200	1400		
1000	1000	1200	1300	1200	1300	1100		
1260	1360	1360	1360	1560	1560	1760		
1550	1550	1750	1850	1750	1850	1650		

CUSTOM SIZE - ELECTRIC FORMULA	
1130mm Cabin Width	+ 360 = 1490mm Shaft Width
1120mm Cabin Depth	+ 550 = 1670mm Shaft Depth

All shaft widths and depths may be affected by door sizes (including 2 or 3 pieces) / type and / or subject to factory confirmation

All dimensions are in mm

Note maximum possible cabin area is 1.60m<sup>2</sup>

Shaft dimensions are internal sizes

Flush car operating panels affects cabin / shaft dimensions

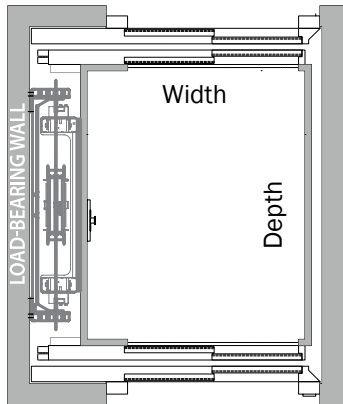
Door opening sizes affected by shaft sizes

\* 1100mm (w) x 1400mm (d) required for compliant limited mobility access

\* Some popular sizes are pre-engineered for short lead times and lower prices



## opposite opening



Cabin Width  
Cabin Depth  
Internal Shaft Width  
Internal Shaft Depth

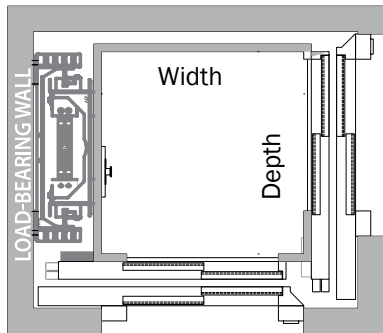
POPULAR HYDRAULIC SIZES							*
800	1000	1000	1000	1200	1200	1100	
1000	1000	1200	1300	1200	1300	1400	
1250	1450	1450	1450	1550	1550	1550	
1430	1430	1630	1730	1630	1730	1830	

CUSTOM SIZE - HYDRAULIC FORMULA	
1120mm Cabin Width	+ 450 = 1570mm Shaft Width
1130mm Cabin Depth	+ 430 = 1560mm Shaft Depth

POPULAR ELECTRIC SIZES							*
900	1000	1000	1000	1200	1200	1100	
1000	1000	1200	1300	1200	1300	1400	
1400	1500	1500	1500	1600	1600	1600	
1430	1430	1630	1730	1630	1730	1830	

CUSTOM SIZE - ELECTRIC FORMULA	
1120mm Cabin Width	+ 500 = 1620mm Shaft Width
1130mm Cabin Depth	+ 430 = 1560mm Shaft Depth

## adjacent opening



Cabin Width  
Cabin Depth  
Internal Shaft Width  
Internal Shaft Depth

POPULAR HYDRAULIC SIZES							*
800	1000	1000	1000	1200	1200	1100	
1000	1000	1200	1300	1200	1300	1400	
1350	1550	1550	1550	1700	1700	1650	
1320	1320	1520	1620	1520	1620	1720	

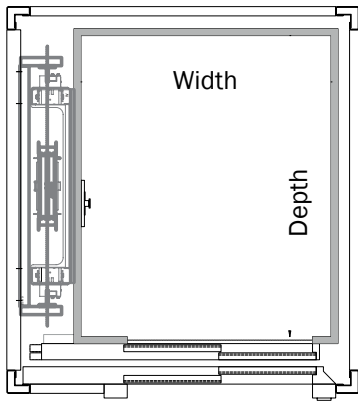
CUSTOM SIZE - HYDRAULIC FORMULA	
1120mm Cabin Width	+ 550 = 1670mm Shaft Width
1130mm Cabin Depth	+ 320 = 1450mm Shaft Depth

POPULAR ELECTRIC SIZES							*
900	1000	1000	1000	1200	1200	1100	
1000	1000	1200	1300	1200	1300	1400	
1500	1600	1600	1600	1800	1800	1700	
1320	1320	1520	1620	1520	1620	1720	

CUSTOM SIZE - ELECTRIC FORMULA	
1120mm Cabin Width	+ 600 = 1720mm Shaft Width
1130mm Cabin Depth	+ 320 = 1450mm Shaft Depth

# shafts by Lift Shop - designed to fit your space

## single opening - side drive



Cabin Width  
Cabin Depth  
External Shaft Width  
External Shaft Depth

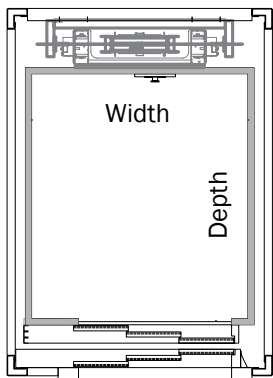
POPULAR HYDRAULIC SIZES								*
800	1000	1000	1000	1200	1200	1100		
1000	1000	1200	1300	1200	1300	1400		
1350	1550	1550	1550	1750	1750	1650		
1420	1420	1620	1720	1620	1720	1820		

CUSTOM SIZE - HYDRAULIC FORMULA	
1120mm Cabin Width	+ 550 = 1670mm Shaft Width
1130mm Cabin Depth	+ 420 = 1550mm Shaft Depth

POPULAR ELECTRIC SIZES								*
900	1000	1000	1000	1200	1200	1100		
1000	1000	1200	1300	1200	1300	1400		
1500	1600	1600	1600	1800	1800	1700		
1420	1420	1620	1720	1620	1720	1820		

CUSTOM SIZE - ELECTRIC FORMULA	
1120mm Cabin Width	+ 600 = 1720mm Shaft Width
1130mm Cabin Depth	+ 420 = 1550mm Shaft Depth

## single opening - rear drive



Cabin Width  
Cabin Depth  
External Shaft Width  
External Shaft Depth

POPULAR HYDRAULIC SIZES								*
800	1000	1000	1000	1200	1200	1400		
1000	1000	1200	1300	1200	1300	1100		
1260	1460	1460	1460	1660	1660	1860		
1620	1620	1820	1920	1820	1920	1720		

CUSTOM SIZE - HYDRAULIC FORMULA	
1130mm Cabin Width	+ 460 = 1590mm Shaft Width
1120mm Cabin Depth	+ 620 = 1740mm Shaft Depth

POPULAR ELECTRIC SIZES								*
900	1000	1000	1000	1200	1200	1400		
1000	1000	1200	1300	1200	1300	1100		
1360	1460	1460	1460	1660	1660	1860		
1670	1670	1870	1970	1870	1970	1770		

CUSTOM SIZE - ELECTRIC FORMULA	
1130mm Cabin Width	+ 460 = 1590mm Shaft Width
1120mm Cabin Depth	+ 670 = 1790mm Shaft Depth

All shaft widths and depths may be affected by door sizes (including 2 or 3 pieces) / type and / or subject to factory confirmation

All dimensions are in mm

Note maximum possible cabin area is 1.60m<sup>2</sup>

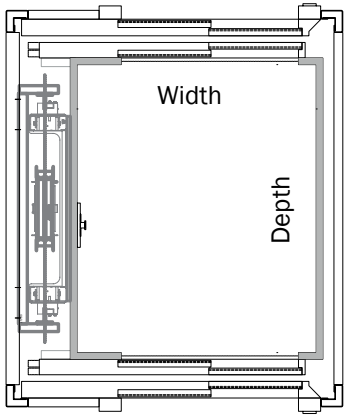
Flush car operating panels may affect cabin / shaft dimensions

Some popular sizes are pre-engineered for short lead times and lower prices

\* Shaft dimensions are external sizes (Please allow +50mm to width and depth dimensions for space provided)

\* 1100mm (w) x 1400mm (d) required for compliant limited mobility access

## opposite opening



Cabin Width  
Cabin Depth  
External Shaft Width  
External Shaft Depth

### POPULAR HYDRAULIC SIZES \*

Cabin Width	800	1000	1000	1000	1200	1200	1100
Cabin Depth	1000	1000	1200	1300	1200	1300	1400
External Shaft Width	1350	1550	1550	1550	1750	1750	1650
External Shaft Depth	1530	1530	1730	1830	1730	1830	1930

### CUSTOM SIZE - HYDRAULIC FORMULA

1120mm Cabin Width + 550 = 1670mm Shaft Width  
1130mm Cabin Depth + 530 = 1660mm Shaft Depth

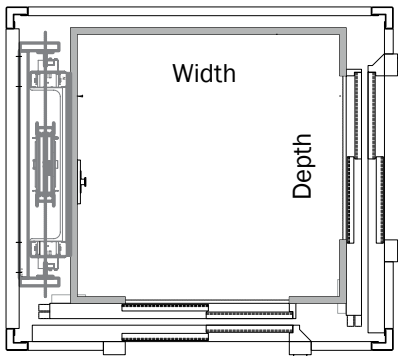
### POPULAR ELECTRIC SIZES \*

Cabin Width	900	1000	1000	1000	1200	1200	1100
Cabin Depth	1000	1000	1200	1300	1200	1300	1400
External Shaft Width	1500	1600	1600	1600	1800	1800	1700
External Shaft Depth	1530	1530	1730	1830	1730	1830	1930

### CUSTOM SIZE - ELECTRIC FORMULA

1120mm Cabin Width + 600 = 1720mm Shaft Width  
1130mm Cabin Depth + 530 = 1660mm Shaft Depth

## adjacent opening



Cabin Width  
Cabin Depth  
External Shaft Width  
External Shaft Depth

### POPULAR HYDRAULIC SIZES \*

Cabin Width	800	1000	1000	1000	1200	1200	1100
Cabin Depth	1000	1000	1200	1300	1200	1300	1400
External Shaft Width	1450	1650	1650	1650	1850	1850	1750
External Shaft Depth	1420	1420	1620	1720	1620	1720	1820

### CUSTOM SIZE - HYDRAULIC FORMULA

1120mm Cabin Width + 650 = 1770mm Shaft Width  
1130mm Cabin Depth + 420 = 1550mm Shaft Depth

### POPULAR ELECTRIC SIZES \*

Cabin Width	900	1000	1000	1000	1200	1200	1100
Cabin Depth	1000	1000	1200	1300	1200	1300	1400
External Shaft Width	1600	1700	1700	1700	1900	1900	1800
External Shaft Depth	1420	1420	1620	1720	1620	1720	1820

### CUSTOM SIZE - ELECTRIC FORMULA

1120mm Cabin Width + 700 = 1820mm Shaft Width  
1130mm Cabin Depth + 420 = 1550mm Shaft Depth

Westwood, LA



## types



Side Opening



Centre Opening



3 Piece



Framed Glass



Frameless



Diamond

## finishes

Steel

Primed (rust proof)

Skinplate

Galvanised

Framed glass

Frameless glass

Stainless steel

Laminate

RAL (powdercoated)

European colour of choice

Fire rated 1- 2 hours

A316 stainless steel

# hotel style steel and glass shafts

Pre engineered shafts for internal and external applications are designed to be carried onto site through regular door openings.

The structural steel can be RAL powdercoated or merely galvanised for cladding by others.

Stainless steel is also available, discuss with your designer.



Cross Bracing



Ring Beams



Brackets



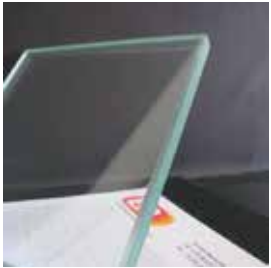
TT - 02



TT - 01

Awnings will not prevent water from entering the lift shaft

# shaft cladding / structure / walls / doors



Transparent



Etched  
Neutral



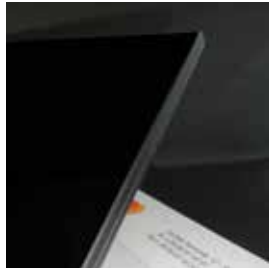
Milky  
White



Fume  
Smoked



Pure White



Pub Nero  
Black



Stop-Sol Bronze  
Bronzed



Stop-Sol Grey  
Reflective



Mirror  
Silver / Grey / Bronze



Brushed  
Stainless Steel



Polished  
Stainless Steel



Galvanised + RAL  
Powdercoated







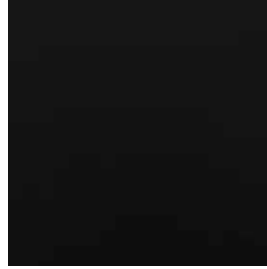
## Italian Skinplate Finishes



F12PPS  
Similinox



F41PPS  
Stainless Look



N3PP  
Gloss Black



N3S  
Matt Black



PPS1 Grigio



PPS11  
Avorio



DT29  
Beige



N4  
Anthracite



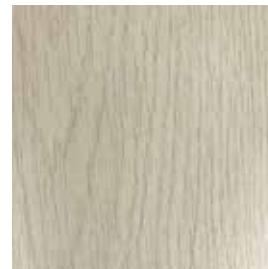
A1  
Textured White



A32PP  
Smooth White



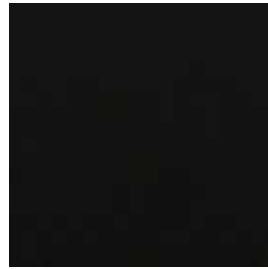
DL36A  
Dark Wood



DL8A  
Whitewash Timber



## Arpa Laminate Finishes



0509



3320



3192



4367



4518



4511



4517



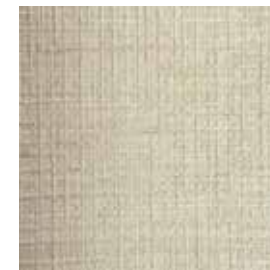
4071



0001



9150

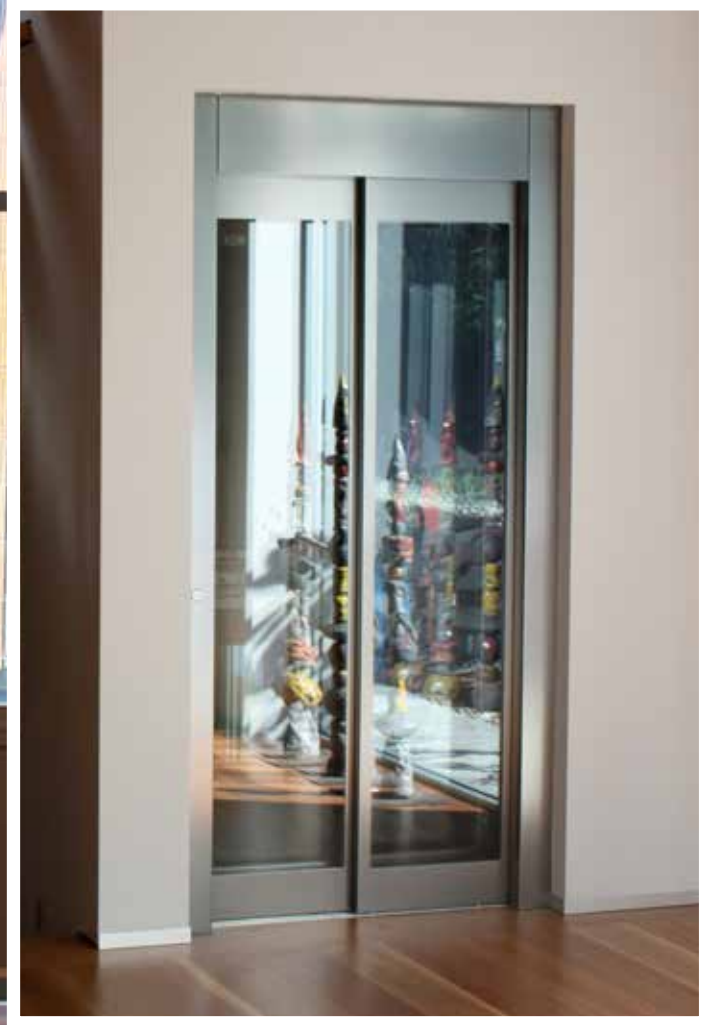


2619



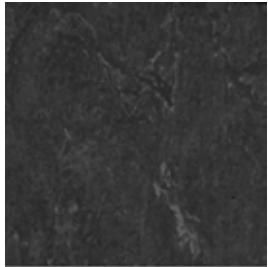
2618

Clareville, NSW



*“Designed to compliment  
your decor”*

### Vinyl Collection



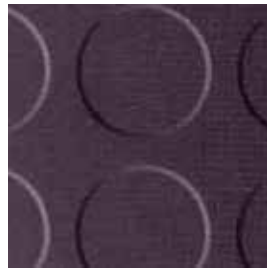
131 - 081  
Private Black



158  
Tabac Grey



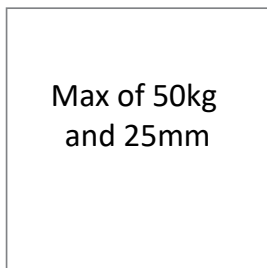
121 - 155  
Smoked Pearl



Gomma a Bolle  
Grigio



Gomma a Bolle  
Nero



Max of 50kg  
and 25mm

Custom

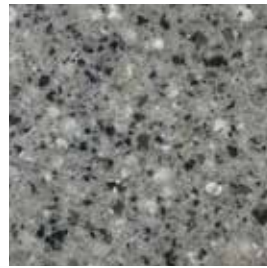
### Stone Collection



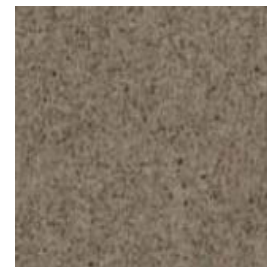
677  
White Star



607  
Polar Ice



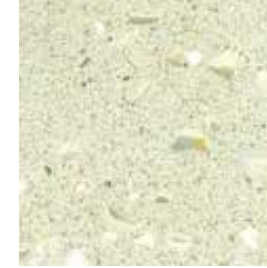
Titan Grey



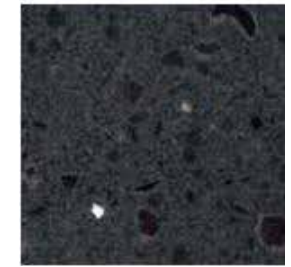
Clay



Venus Grey



616  
Perla Bianca



Blue Whale



2400  
White



Statuario



Terracotta



Black Star

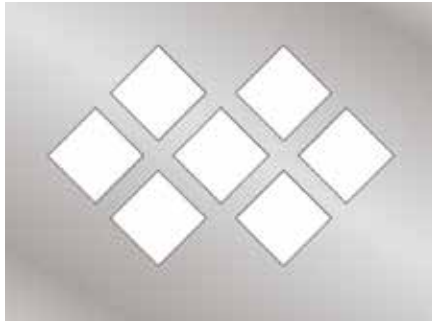


Nero Maltese

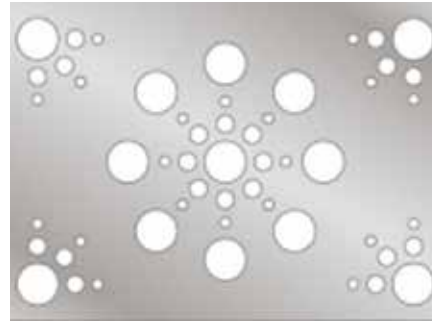
Irvine, CA



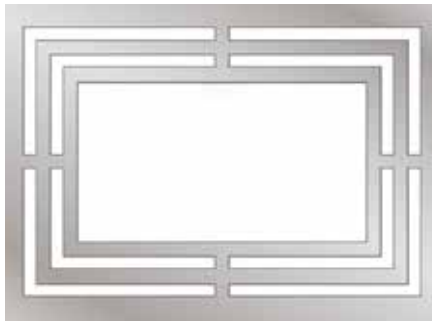
## Energy Efficient LEDs



Dama



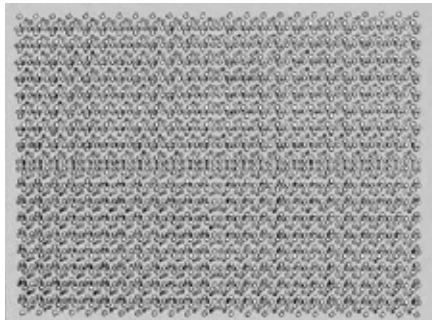
Universal



Labirint



LED Spotlights



Starry Sky



Ceiling Finishes  
Skinplate  
RAL  
Stainless Steel

Custom Design Your Own



Aluminium



Brushed Stainless Steel



Polished Stainless Steel

## Models



Vertical



Flush Vertical

## Displays



Icaro



Dedalo

## Finishes

- Skinplate (n/a flush)
- Galvanized
- Stainless Steel (brushed or polished)
- RAL Powdercoated

## Flush mounted phones



Black



Brushed  
Stainless Steel



Polished  
Stainless Steel

## Handset phones



Black



GSM phone  
NBN ready emergency system

## Machine cabinet



700mm x 560mm x 1535mm  
in F12PPS skinplate

## SYDNEY

1/75 Corish Circle  
Eastgardens NSW 2036  
T 02 9666 3939



## PERTH

Home Base  
55 Salvado Road  
Subiaco WA 6008  
T 08 9460 0666

## MELBOURNE

1/1 Belgium Avenue  
Richmond VIC 3121  
T 03 9421 4222



## BRISBANE

4/300 Cullen Avenue East  
Eagle Farm QLD 4009  
T 07 3014 0633

## LOS ANGELES

Pacific Design Center  
Blue Building - Suite B-110  
8687 Melrose Avenue  
West Hollywood CA 90069  
T 855 326 8847



[liftshop.com.au](http://liftshop.com.au)  
1800 440 714

*Awesome*

### Disclaimer

All illustrations, information and specifications presented and referred to in this brochure were correct at the time when this brochure was approved for printing. The colour in the photographs may vary from actual colours, however **LiftShop** Pty Ltd reserves the right, subject to laws of Australia and/or the regulations of any competent authority which may apply from time to time, at its discretion anytime and without prior notice to discontinue or change the models, features, specifications, designs and prices of the products referred to in this brochure and any optional equipment therefore without incurring any liability whatsoever to any purchaser or prospective purchaser of any such products.